

MACHINE PROGRAMMING SWM B1500 RH

(Exit with key switch OFF)

Valid from software version ...3.019, minor deviation from older versions
Status: 06.07.2010

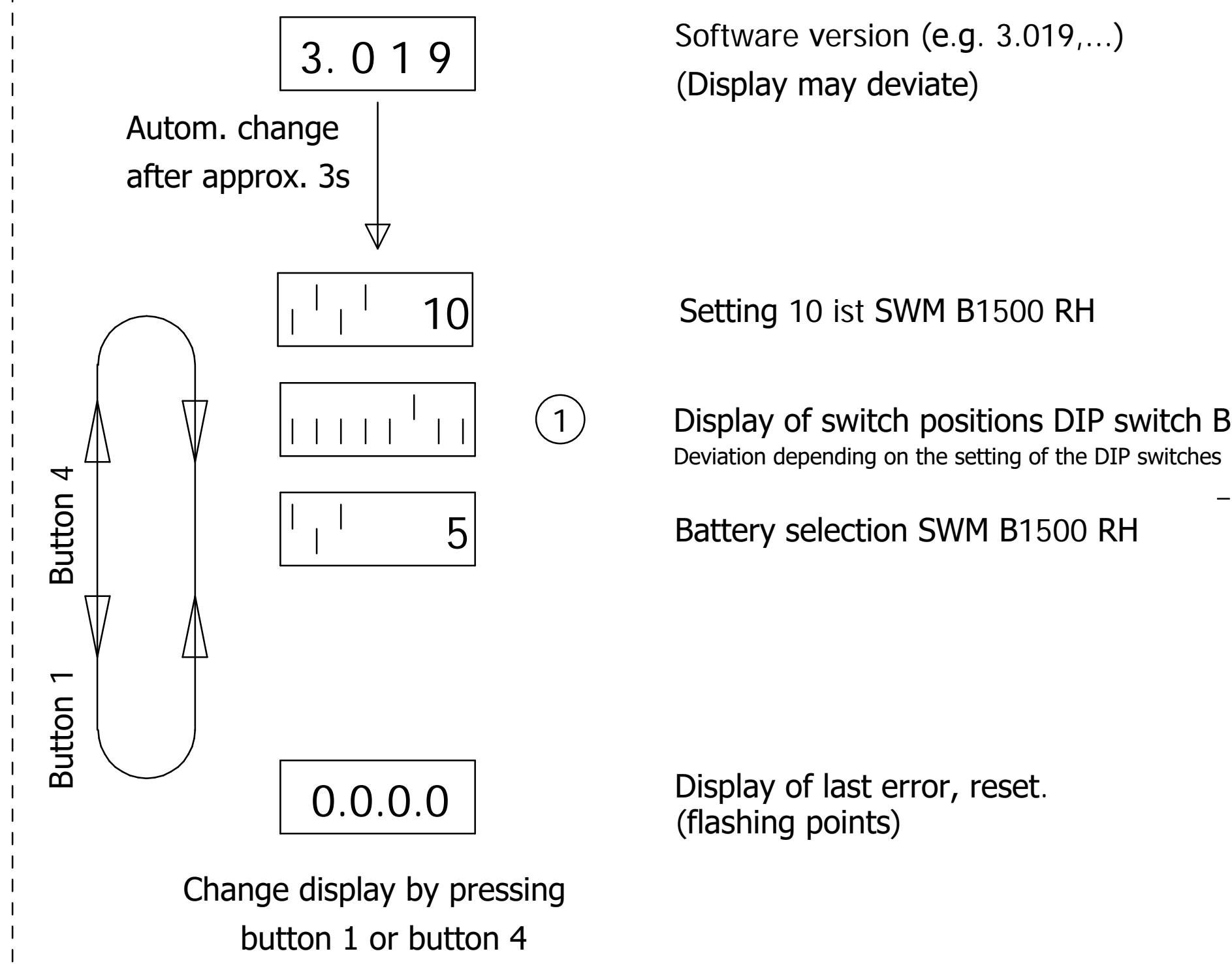
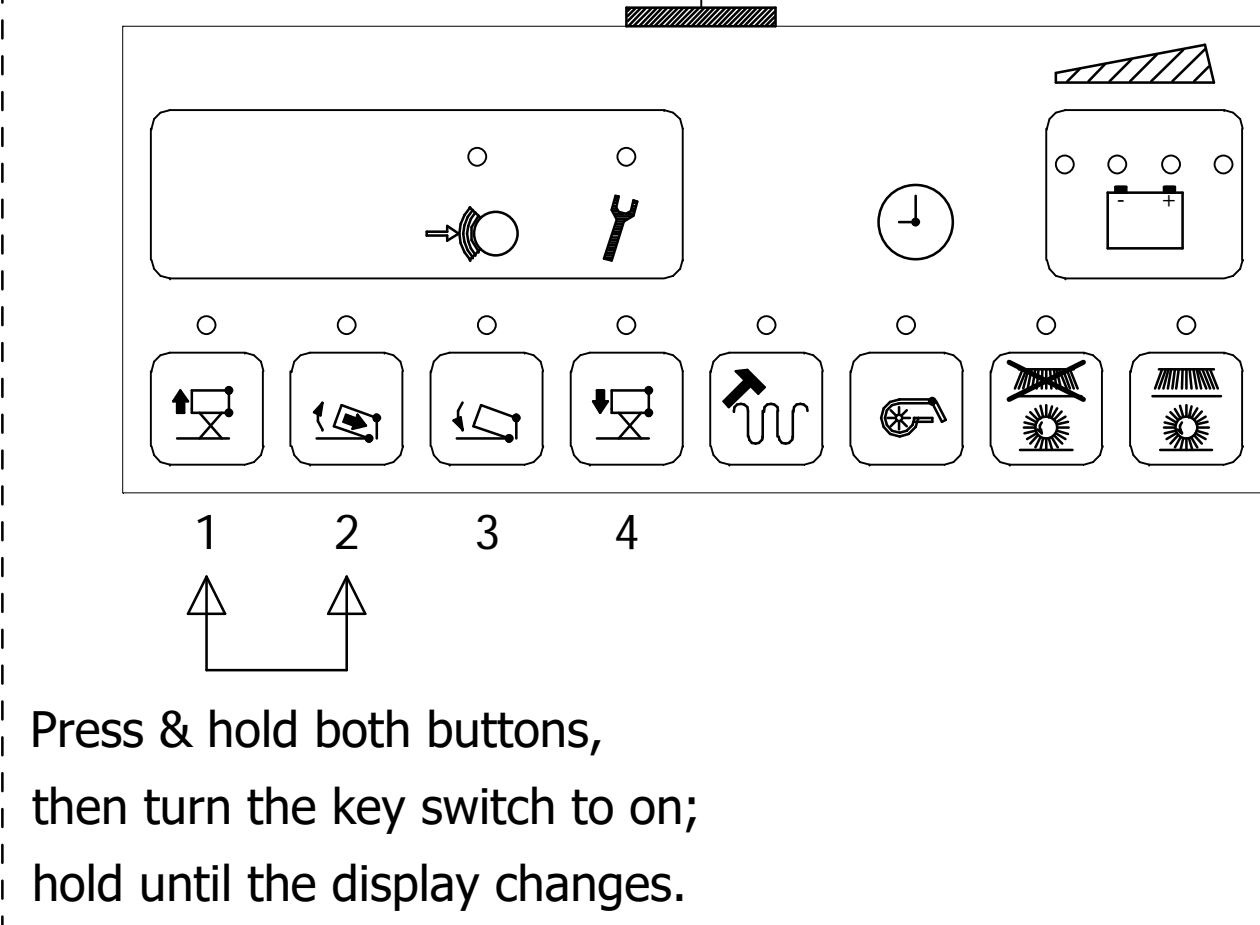
Menus :

Selecting a menu :

Display in the operating hours meter :

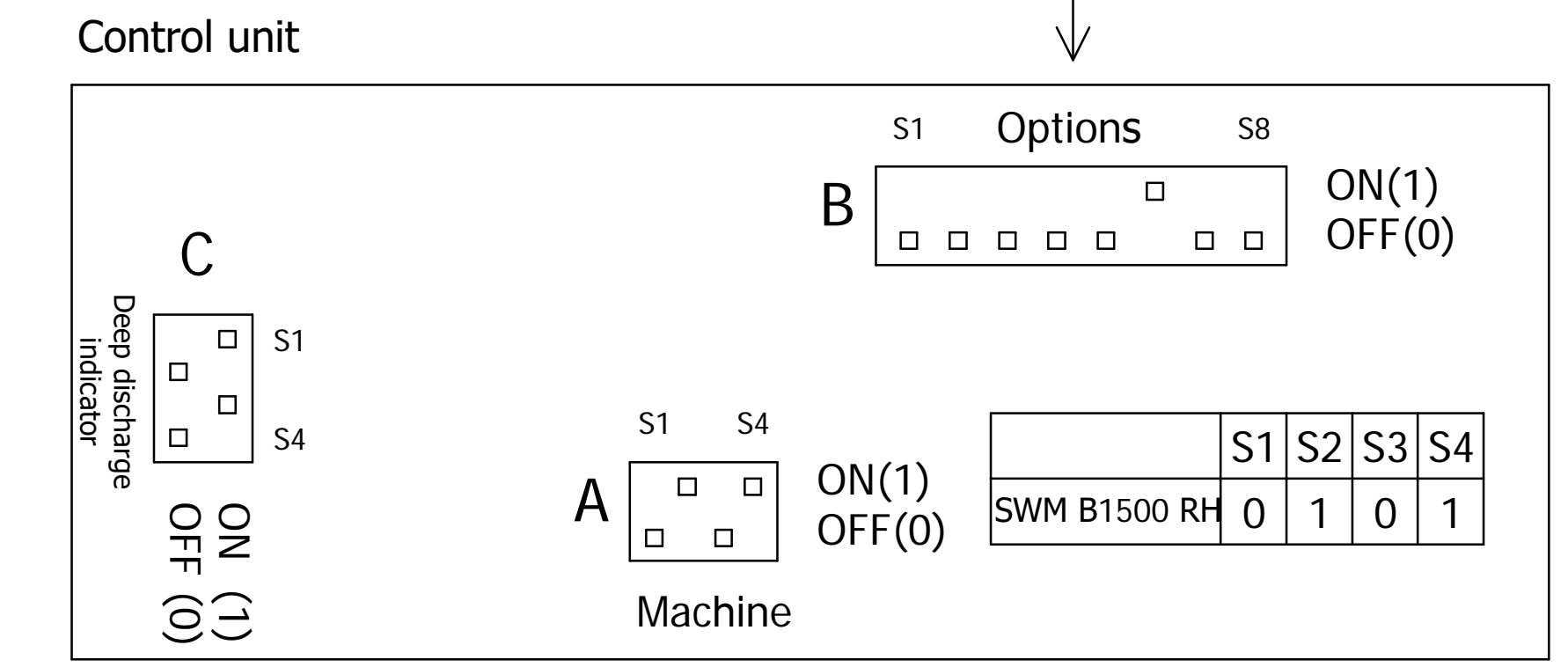
Changing the setting by... :

Setting 1
Service mode
- Which machine is set?
- Reset the last error



DIP switch A on control unit
DIP switch B on control unit
DIP switch C on control unit
Resetting errors :
Press the program button (green) until 0.0.0.0 appears on the display

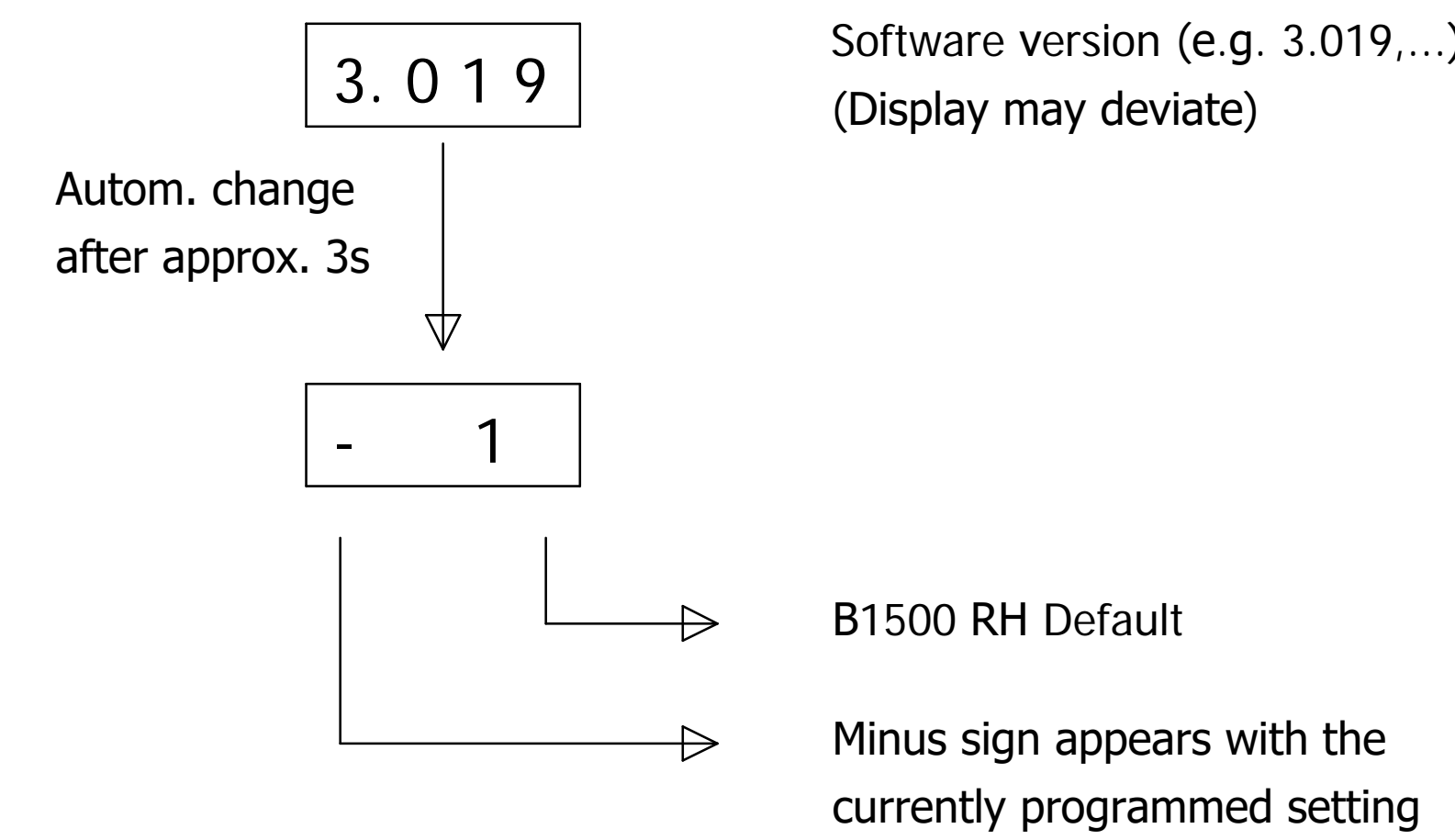
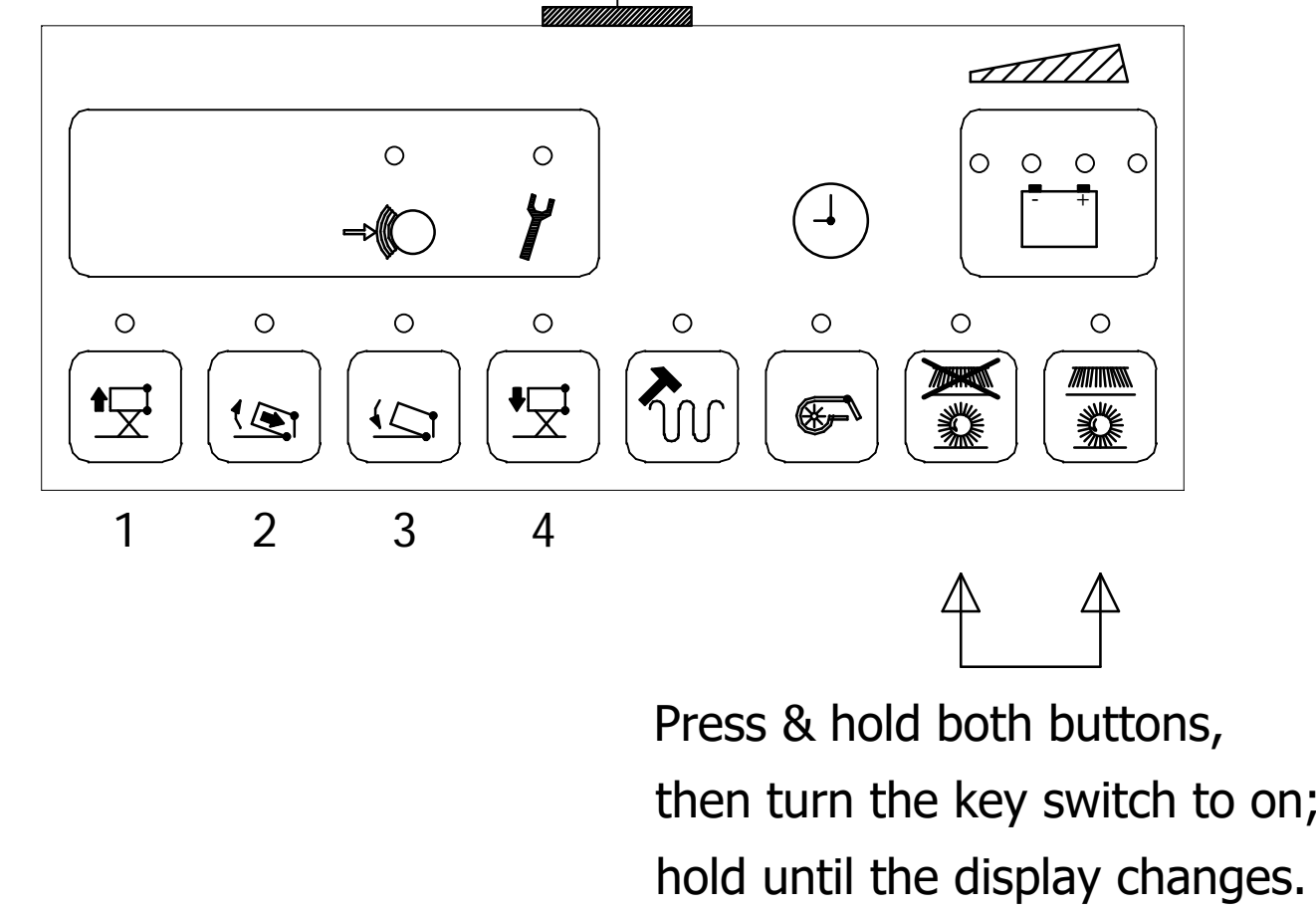
Electrical options can be set with SWM B1500 RH
S3 = ON -> with side brush-left
S6 = ON -> SB SB speed adjustment
S8 = ON -> error message 3456 aktiv



Only with SWM B1500 RH, setting PzS 36V

	Gel (Sonnerschein)	Gel (Deta)	PzS	PzS external	GIS	GIS external		
1	0	1	1	0	1	0	1	0
2	1	1	0	0	1	1	0	0
3	1	1	1	1	0	0	0	0
4	ON = 24V / OFF = 36V							

Setting 2
Fixed program variant (FPV)
- Behaviour of the shaking system and filter vacuum system depending on the cleaning units



Select: Select the desired variant with button 1 or button 4
Save: Press the program button (green) until the minus sign appears

Variant	Description
1	- Filter vacuum system is switched on with sweeping/program - No manual shaking as long as the button is pressed - No automatic shaking after sweeping/program or before emptying
2	- Shaking as long as the button is actuated - Filter vacuum system is switched on with sweeping/program - No automatic shaking after sweeping/program or before emptying
3	- Filter vacuum system is switched on with sweeping/program - Automatic shaking before emptying (raise) - No manual shaking as long as the button is pressed - No automatic shaking after sweeping/program
4	- Filter vacuum system is switched on with sweeping/program - Automatic shaking after sweeping/program - No automatic shaking before emptying - No manual shaking as long as the button is pressed
5	- Shaking as long as the button is actuated - Filter vacuum system is not switched on with sweeping/program - No automatic shaking after sweeping/program or before emptying
6	- Automatic shaking before emptying (raise) - No automatic shaking after sweeping/program - No manual shaking as long as the button is pressed - Filter vacuum system is not switched on with sweeping/program
7	- Automatic shaking after sweeping/program - No manual shaking as long as the button is pressed - No automatic shaking before emptying - Filter vacuum system is not switched on with sweeping/program

MACHINE PROGRAMMING SWM B1500 RH

(Exit with key switch OFF)

Valid from software version ...3.019, minor deviation from older versions

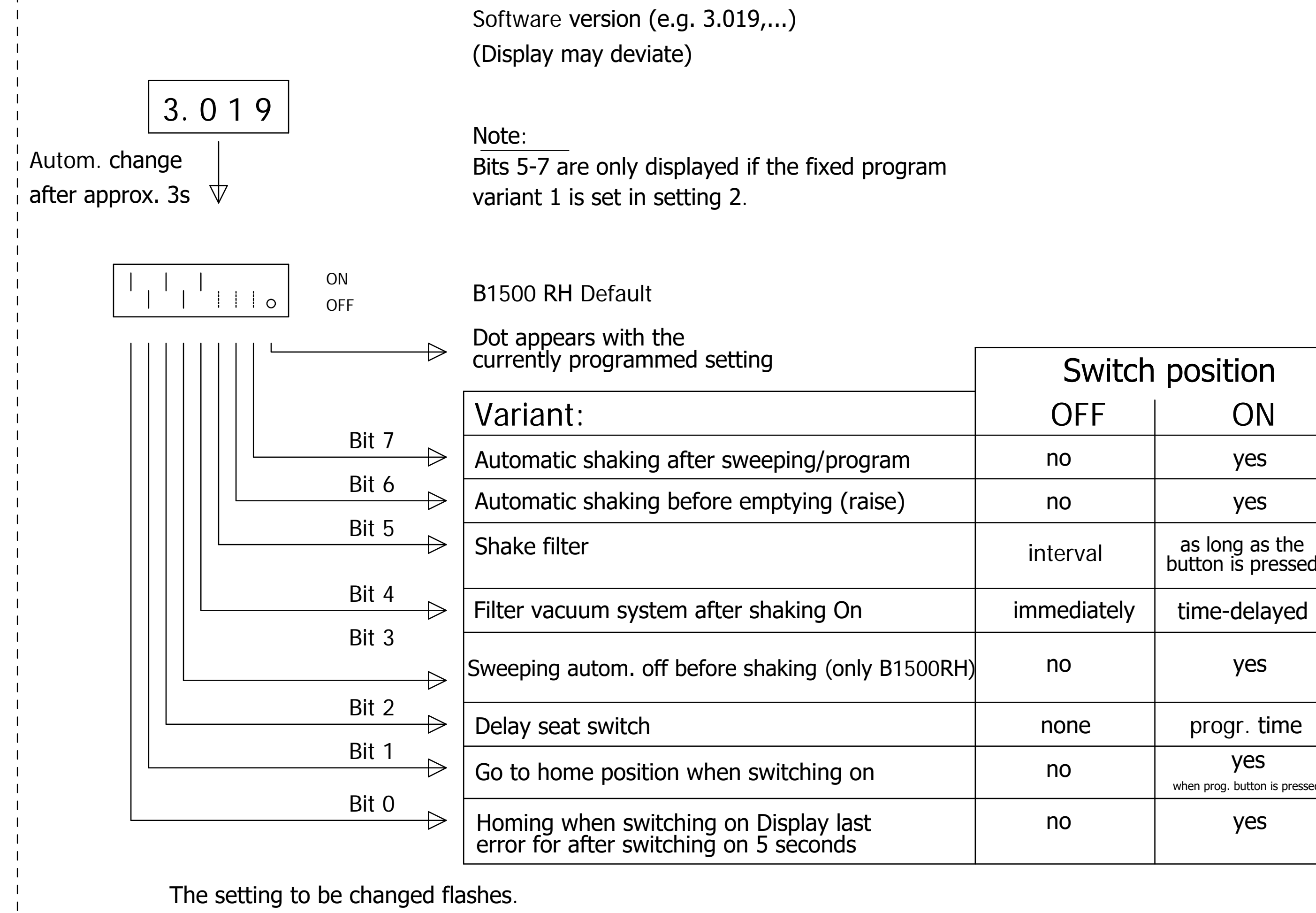
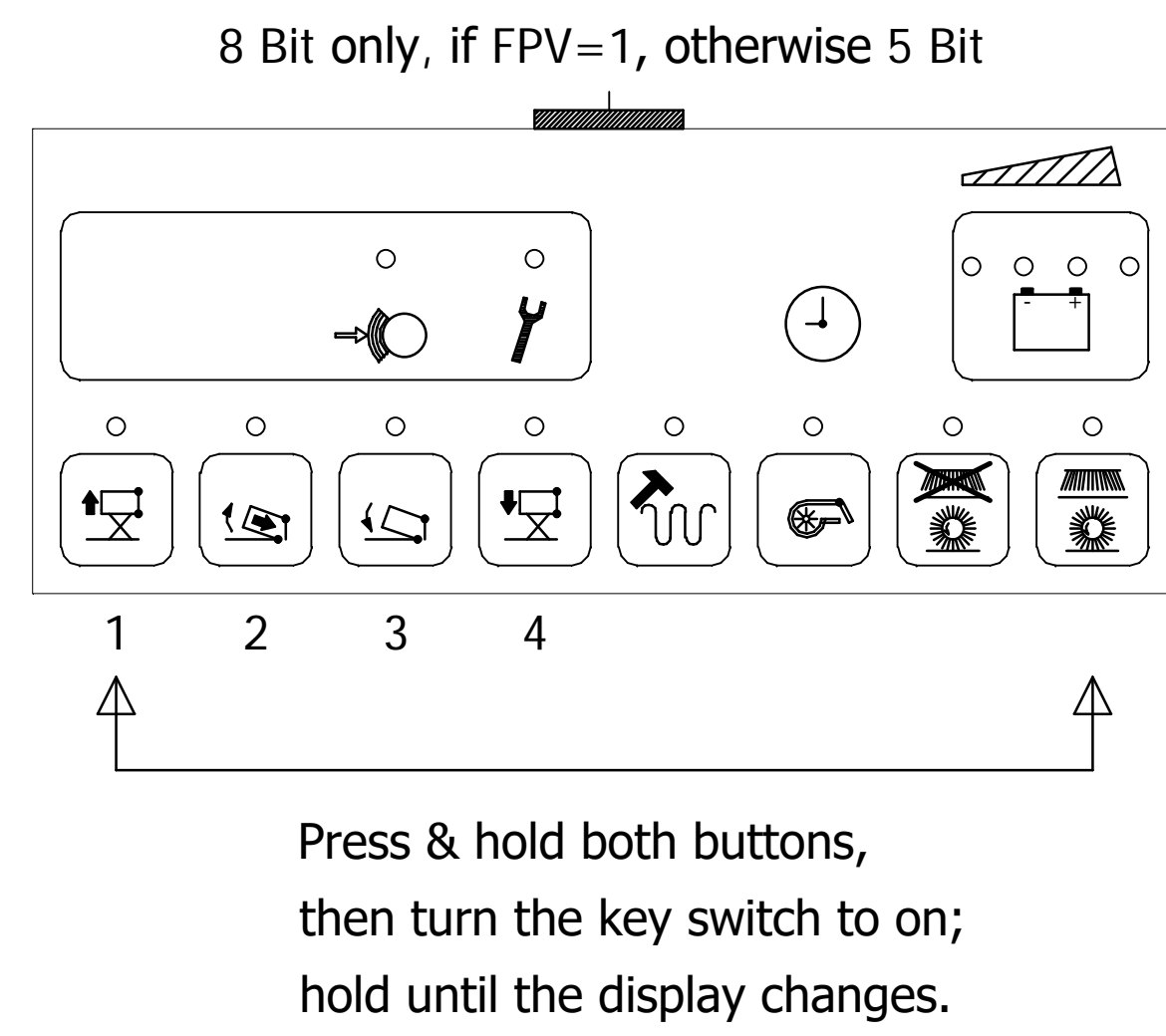
Menus :

Selecting a menu :

Display in the operating hours meter :

Changing the setting by... :

Setting 3 Programmable program variants (PPV)



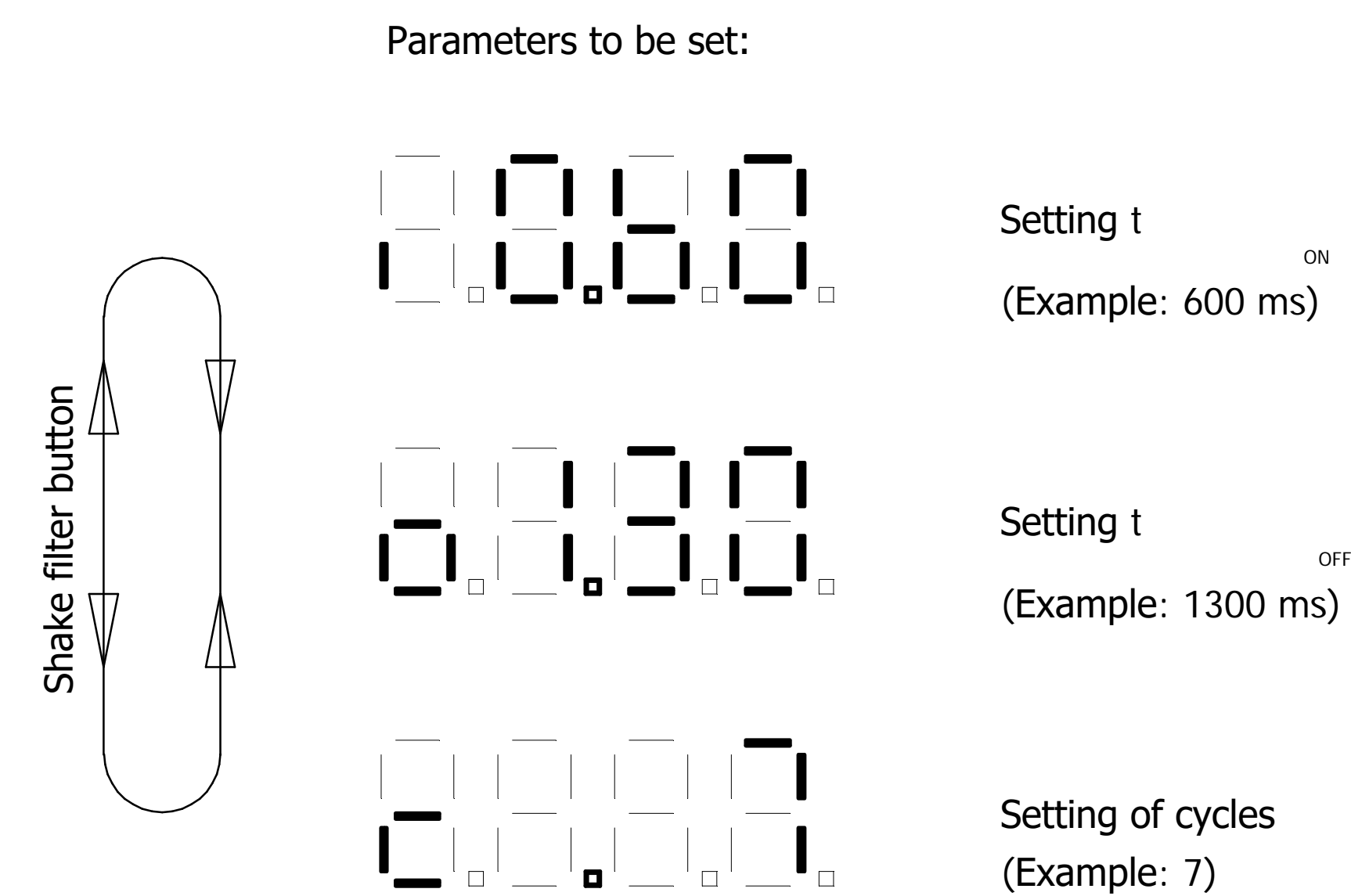
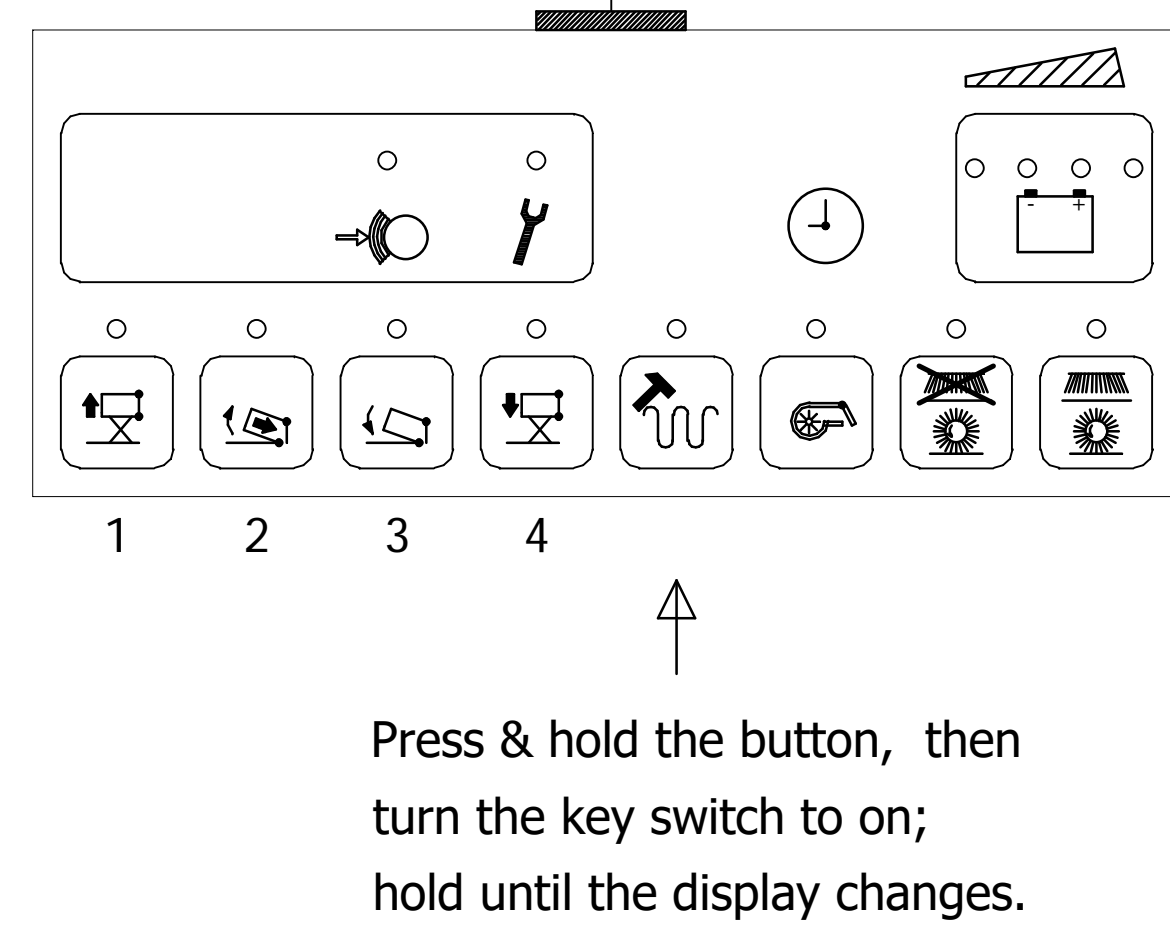
Select: Select the desired setting with button 1 or button 4

Change: Use button 2 to set the dash to ON or OFF

Save: Press the program button (green) until the dot appears on the display (no flashing)

Setting 4 - Setting of the shaking intervals

Note:
It is not necessary to set or change the shaking interval. The interval can only be changed in harsh applications. Improper setting will cause the filter system to function incorrectly !



Pressing the Shake filter button again takes you to the respective menu item.
The respectively displayed value is incremented/decremented via the buttons 1 and 4.

The values can be set in the following ranges:

t _{ON}	0.05 ... 2.50 sec
t _{OFF}	0.05 ... 2.50 sec
c	1 ... 10

Pressing the Shake filter button for longer than 3 sec. in setting mode resets the changed values to the default setting.

t _{ON}	0.60 sec	Valid from July 2010 for machines with resonance filter system
t _{OFF}	1.30 sec	
c	7	

The changed value must be confirmed by pressing the green button for longer than 2 seconds. The outermost point in the display lights up if saving was successful. Each individual setting must be confirmed.

The setting menu can be exited by turning off the machine with the key switch.